

VanJee LiDAR would create vision for Autonomous vehicle to realize autonomous operation with utmost safety.

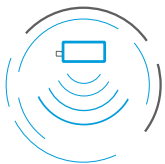
VanJee LiDAR

Fully Solid-State Blind Spot LiDAR WLR-750

Description

VanJee LiDAR WLR-750 is a FLASH blind spot LiDAR with ultra-compact size(70mm x 70mm x 70mm). Due to LiDAR' s impressive detection performance(70°x140°FOV, equivalent 150 line resolution and up to 50m ranging capability) , this LiDAR can provide real-time perception of small objects, close range road participants, and others. The LiDAR effectively eliminates blind spots and ensures utmost safety for autonomous vehicles and robotics.

Advantages



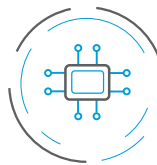
Ultra-Wide Field of View
The LiDAR has an ultra-wide field of view of 140° x 70°



Zero Blind Spot
The LiDAR can clearly detect objects at close range with virtually zero blind spots



Image-Like Point Cloud
The LiDAR can clearly detect small objects such as cones, license plates, and railings




Ultra-Reliability
The LiDAR has no moving parts inside, making it suitable for automotive-grade mass production.

VANJEE Headquarters

 Building No.12, ZPark, Haidian District, Beijing 100193, China

 +86 10 59766766  www.vanjee.net

 ibd@vanjee.net

WLR-750

Parameters

Basic Parameters >>>

Model	WLR-750
Number of Channels	150
Size	70mm×70mm×70mm
Operating Voltage	9~16VDC
Operating Temperature	-40°C~85°C
Scanning Principle	FLASH
Laser Wavelength	940nm
Power Consumption	12W

Performance Parameters >>>

Horizontal FOV	140°	Scanning Frequency	10 Hz
Vertical FOV	70°	Ranging Distance	50m(30@10% Reflectivity)
Horizontal Resolution	0.5°	Ranging Accuracy	±5cm@1σ
Vertical Resolution	0.5°		

Relevant Certification >>>

Ingress Protection	IP67	Communication Interface	Industrial Ethernet (1000M Base T1)
Laser Safety	Class I (Eye Safety)	Transport Protocol	UDP packets over Ethernet
Time Synchronization	NTP/PTP		

WLR-750

Scenarios

